

Ceramic Socket G04-00116

Operating voltage: 230V-50/60HZ

**MAX
250W**

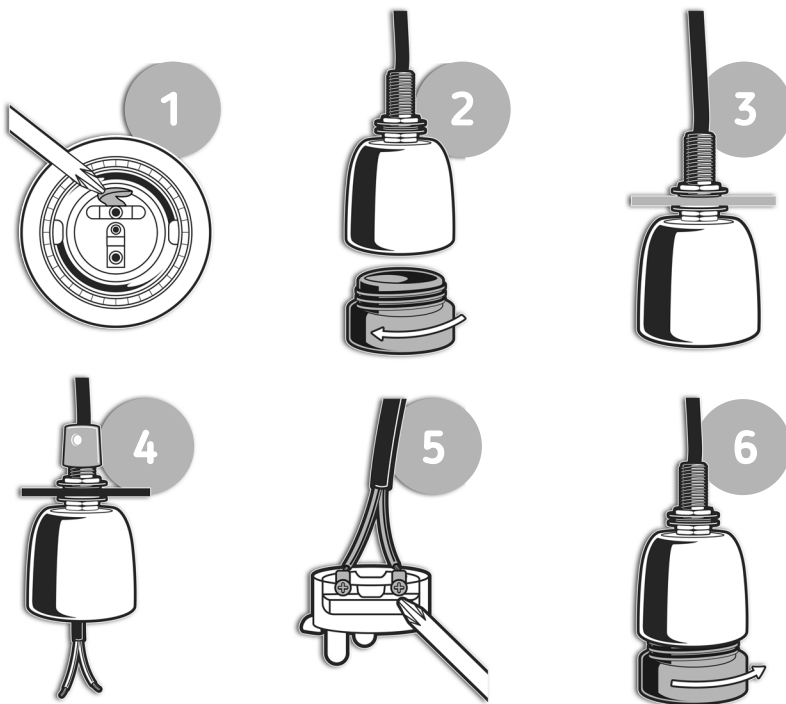
Switching current: Max. 1.3A



1. WARNING :

- Unwind the cord completely before using it.
- Disconnect the power plug before handling the socket.
(Assembly and disassembly)
- If the power cable is damaged, it must be replaced by the manufacturer, its after-sales service or similarly qualified persons (electrician) in order to avoid any danger.

2. Assembly :



- 1 PRESS THE METAL LOCK WITH A SCREWDRIVER TO UNLOCK THE SOCKET RING.
- 2 UNSCREW THE SOCKET.
- 3 PLACE THE SOCKET BODY.
- 4 THEN PUT THE CABLE BACK.
- 5 CONNECT THE CABLES TO THE SOCKET CONTACTORS.
- 6 SCREW THE SOCKET RING.

FOLLOW THE SAME INSTRUCTIONS FOR ASSEMBLY AND DISASSEMBLY.

3. Putting into service :

Installation in the terrarium is at your own risk.
The power cord switch turns the lamp on and off.
For the use of UVB lamps, follow the instructions of the maker.

Use in a dry environment.

Check the ventilation of your installations.

Ensure that animals have the opportunity to move away and have a cold spot.

4. Safety instructions :

Maximum ambient temperature: 45°C.
The socket should not be used if damaged.
Before changing a light bulb, disconnect the power plug.
If using a UVB lamp, do not look at the lamp.

Safety distance: Informations given by the bulbs manufacturer.

Lamps to be used: All bulbs not exceeding 250W.

Respect the instructions for use of the bulbs, particularly for the maximum distance from the illuminated surfaces.